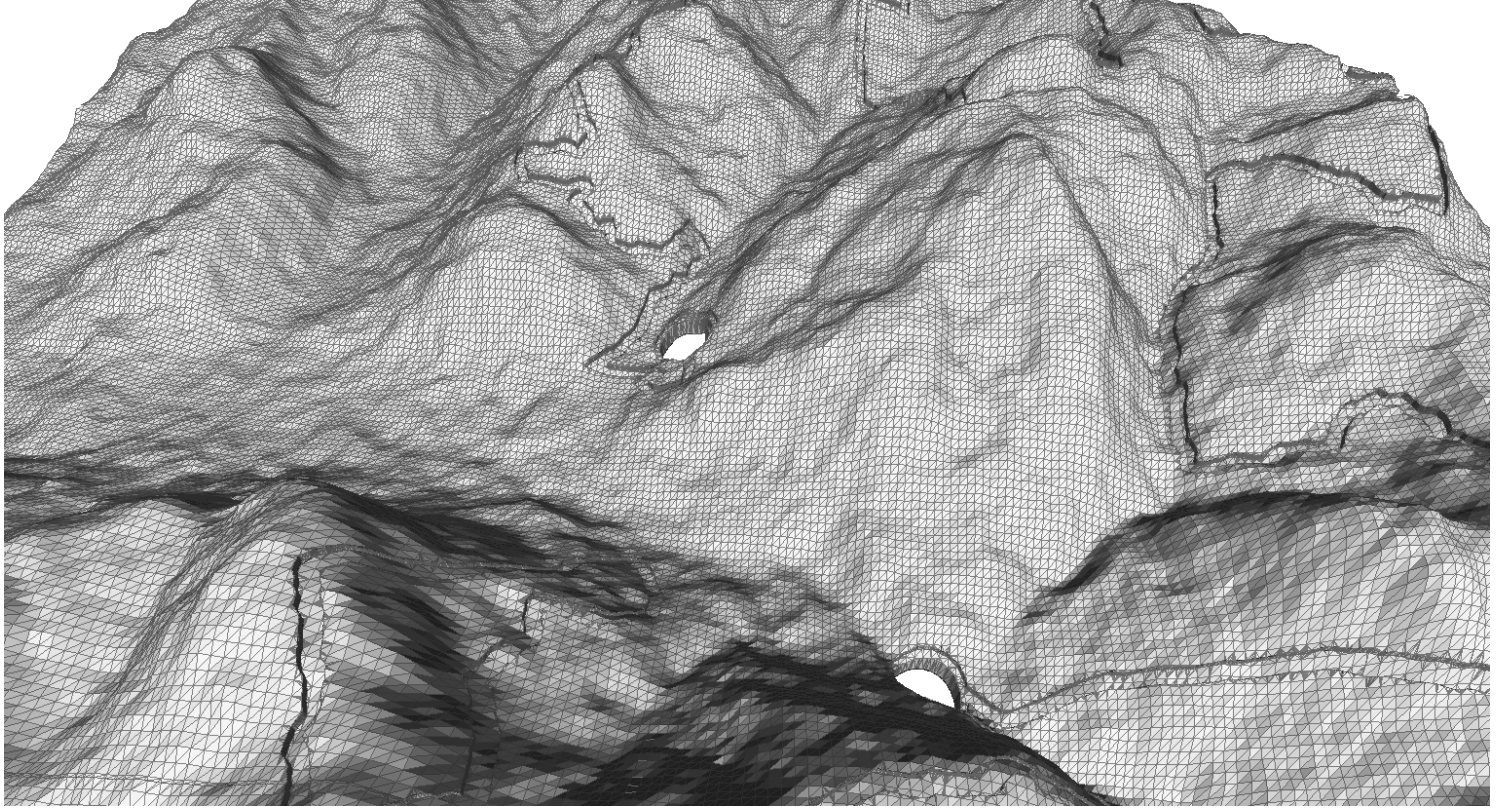


2015 VIRGIL CREST ULTRAS TOPOGRAPHIC DIORAMA



Dimensions: 9985 × 13080 meters
(approximately 6 × 8 miles)

Elevation: 655 meters maximum
320 meters minimum
335 meters total relief
6x vertical exaggeration

Data Sources: GPX track of course
SRTM 1 Arc-Second DEM
(~36 meter pixel resolution)

Contact: Jim DeVona
jim@anoved.net
anoved.net/topo